

# SIZING CHARTS

Sizing is for reference only. Actual sizing may vary by style. To get a true sense of product sizes, we encourage you to use samples, which we offer at a discounted price. And there's no extra charge for larger sizes on in-stock styles.

**Trimark** *Tops & jackets to fit body measurements / Regular & Tall*  
*Tall styles provide a fit that includes an additional 2" in the length of the body and the sleeves.*  
*Unisex styles have men's standard fit. It is recommended women choose one size smaller (size down 1 size). Please refer to the sizing charts.*

MEN'S/UNISEX TOPS AND JACKETS	XS	S	M	L	XL	2XL	3XL	4XL	5XL
Neck (inches)	13-13.5	14-14.5	15-15.5	16-16.5	17-17.5	17.5-18	18.5-19	19.5-20	20.5-21
Chest (inches)	33-35	35-38	39-41	42-44	45-48	49-52	53-56	57-60	61-64
Sleeve Length (inches)	32	33-33.5	34-34.5	35-35.5	36-36.5	37-37.5	38-38.5	38.5-39	39-39.5
Sleeve Length Tall (inches)				37-37.5	38-38.5	39-39.5	40-40.5	40.5-41	41-41.5

MEN'S BOTTOMS	XS	S	M	L	XL	2XL	3XL	4XL	5XL
Waist (inches)	28-29	30-31	32-33	34-35	36-37	38-39	40-41	42-43	44-45
Hip (inches)	34-36	36-38	38-40	40-42	42-44	44-46	46-48	48-50	50-52
Inseam (inches)	31.5	31.5	31.5	31.5	31.5	31.5	31.5		

WOMEN'S TOPS AND JACKETS	XS	S	M	L	XL	2XL	3XL
Sizing Reference	2-4	6-8	10-12	14-16	18	20	22+
Chest (inches)	30-32	33-35	36-38	39-41	42-44	45-47	48-50
Sleeve Length (inches)	29.5-30	30.5-31	31-31.5	32-32.5	32.5-33	33-33.5	33.5-34

WOMEN'S BOTTOMS	XS	S	M	L	XL	2XL	3XL
Sizing Reference	2-4	6-8	10-12	14-16	18	20	22+
Waist (inches)	24-26	26.5-28.5	29-30	31.5-33.5	34-36	36.5-38.5	39-40.5
Hip (inches)	33-35	35.5-37.5	38-40	40.5-42	43-45	45.5-47.5	48-50
Inseam (inches)	31	31	31	31	31	31	31

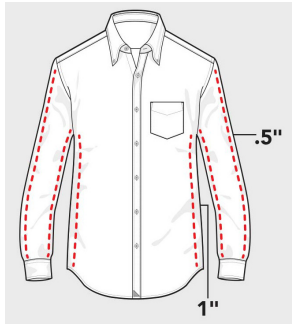
Roots 73™	Tops & jackets to fit body measurements								
MEN'S TOPS	XS	S	M	L	XL	2XL	3XL	4XL	5XL
To Fit Chest	33 - 35	35.5 - 37	38 - 40	41 - 43	44 - 46	47 - 49	50 - 52	53 - 55	56 - 58
To Fit Sleeve Length	31 - 32	32 - 33	33 - 34	34 - 35	35 - 36	36 - 36.75	36.75 - 37.5	37.5 - 38.25	38.25 - 39
Neck Circumference	15	15 - 15.5	15.5 - 16	16 - 16.5	17 - 17.5	18 - 18.5	18.5 - 19	19 - 19.5	19.5 - 20
MEN'S BOTTOMS		S	M	L	XL	2XL	3XL		
Waist		31 - 32	33 - 34	35 - 37	38 - 40	41 - 43	44 - 46		
Hip		35 - 36	36 - 37	38 - 39	43.5 - 45	46.5 - 48	49		
Inseam-Regular		31	31	31	31	31	31		
WOMEN'S TOPS	XS	S	M	L	XL	2XL	3XL		
To Fit Chest	32 - 33	34 - 35	36 - 37	38.5 - 40	41.5 - 43	44.5 - 46	48		
To Fit Sleeve Length	31.75	32.375	33	33.75	34.5	35.25	36		
WOMEN'S BOTTOMS	XS	S	M	L	XL	2XL			
SIZE EQUIVALENT	2	4 - 6	8 - 10	12 - 14	16 - 18	20			
Waist	24 - 25	26 - 27	28 - 29	30.5 - 32	33.5 - 35	36.5			
Hip	34 - 35	36 - 37	38 - 39	40.5 - 42	43.5 - 45	46.5			

Roots 73™ is a trademark of Roots Corporation used under license.

UNTUCKit							
MEN'S +		S	M	L	XL	2XL	3XL
Chest (inches)		35-37	38-40	41-43	44-45	46-47	48-50
Sleeve Length (inches)		32.5-33.5	33.5-34.5	34.5-35.5	35.5-36.5	36-37	36-37
Neck (inches)		14-14.5	15-15.5	16-16.5	17-17.5	18-18.5	18-18.5
WOMEN'S +	XS	S	M	L	XL	2XL	
Numeric Sizing	0	4	8	12	16	18	
Bust (inches)	32.5-33.5	34.5-35.5	36.5-37.5	39-40.5	42-43.5	47	
Natural Waist (inches)	25-26	27-28	29-30	31.5-33	34.5-36	36.5	



**Regular Fit**  
Our classic cut with the perfect untucked length. Runs slightly smaller than traditional shirts.



**Slim Fit**  
One inch less fabric in the body and one half inch less in the sleeve compared to regular fit

+ UNTUCKit Men's shirts run smaller than traditional brands. If you're between size, please order one size up. Women's shirts run true to size.

tentree						
MEN'S		S	M	L	XL	2XL
Neck (inches)		15 - 15.5	15.5 - 16	16 - 16.5	17 - 17.5	17.5 - 18
Sleeve Length (inches)		32.875 - 33.625	33.625 - 34.375	34.375 - 35.125	35.125 - 35.875	35.875 - 36.625
Chest (inches)		36 - 38	38.5 - 40.5	41 - 43	43.5 - 45.5	46.5 - 48.5
Waist (inches)		29 - 31	31.5 - 33.5	34 - 36	36.5 - 38.5	39.5 - 41.5
Low Hip (inches)		35.5 - 37.5	38 - 40	40.5 - 42.5	43 - 45	46 - 48
Inseam (inches)		32	32	32	33	33
WOMEN'S +	XS	S	M	L	XL	
Chest (inches)	31 - 33	33 - 35	35.5 - 37.5	38 - 40	40.5 - 42.5	
Waist (inches)	23.5 - 25.5	25.5 - 27.5	28 - 30	30.5 - 32.5	33 - 35	
Low Hip (inches)	33.5 - 35.5	35.5 - 37.5	38 - 40	40.5 - 42.5	43 - 45	
Sleeve Length (inches)	29.75	30.5	31.25	32	32.75	
Inseam (inches)	29	29	29	30	30	

American Giant

Tops & jackets to fit body measurements / Regular & Tall

MEN'S (inches)		S	M	L	XL	XXL
Chest		36-38	39-41	42-44	45-47	48-50
Waist		29-30	31-32	33-35	36-38	39-41
Hip		36-37	38-39	40-42	43-45	46-48
Sleeve length		34-34.5	34.5-35	35-35.5	35.5-36	36-36.5

WOMEN'S (inches)	XS	S	M	L	XL
Chest	32-33	34-35	36-37	38-39	40-41
Waist	25-26	27-28	29-30	31-32	33-34
Hip	35-36	37-38	39-40	41-42	43-44
Sleeve length	30-30.5	30.5-31	31-31.5	31.5-32	32-32.5

**The sizing charts reference body measurements.**  
If you require garment measurements, please contact customer service.

**Chest**  
Under the arms and across the shoulder blades with a firm and level tape.

**Hip**  
When standing, measure around the widest part of the hip.

**Sleeve length**  
Relax arm, and measure from the centre of the back of the neck, over the shoulder and down to the outer wrist.

**Waist**  
Measure around your natural waistline, while in your underwear. Keep one finger between the tape and your body for an accurate fit.

**Inseam**  
Select a pair of your best-fitting pants of a similar material. Measure from the crotch to the bottom. The number of inches, to the nearest half-inch, is the inseam length.

